

# Ashford Show Society Inc.

## 40th Annual Show

**Saturday 17th and Sunday 18th February 2024**





## Index

	Page
Index	3
Office Bearers	4
Committee	4
Fees	4
Conditions of Show	5
Event Times	6
Entertainment	8
Show Dates	8
Fireworks / Fun for Kids	10
Dog Show	12
Show Jumping and Horse Events	18- 37
Wool in Grease	38- 45
Shearing - Severn Rivers Shears	46- 49
Main Pavilion	62- 88
Forms	89
Advertisers Index	96
Sponsors List	97

# MH

**MATT HARRISON**  
 **BUILDER** 

LIC. No. 126662C

## 0429 231 127

Proud Sponsor of the Ram Ride

## Office Bearers

**President:** Trevor Tindall 0448811813

**Vice President/s:** David Thompson/ Gilbert Fitzhannim

**Secretary:** Christine Wirth

**Treasurer:** Derrin Keane

**Health and Safety:** Derrin Keane

**Public Officer:** Trudy Thompson

**Publicity Officer:** Matt Verri

## Committee:

Trevor Tindall, David Thompson, Gilbert Fitzhannim, Christine Wirth, Derrin Keane, Melissa Willcocks, Warren Thompson, Sandra Cox, Spike Wall, Jason Luckett, Matthew Verri, Ryan Wirth, Rosemary Gordon, Dave Gordon, Margaret Downton, Chris Doney, Kate Reid, Joanne Vines, Greg Vines, Kirsty Beveridge, Chris Thomas, Helen Thomas

## Honorary Life Members:

Les O'Reilly, Des Retallack, Shirley Thompson, Robert Watters, Warren Thompson, David Thompson, Brett Ellis, Daph Hartley, Margaret Mell, Bob Byrnes, Jason Luckett, Trudy Thompson

## Past Honorary Life Members:

Bob Kneipp

Life Memberships are available to purchase at \$120.00

## Fees for 2024

Membership Fees                      Family \$5.00, Single \$3.00

(Payable from 1<sup>st</sup> December each year)

**Entry Fees**                      Car \$5                      Buses \$2 per head ( 7 or more people)

## Fees

Single Phase                      \$15 per day per lead

Three Phase Power                      \$25 per day per lead

Exhibitors Sites                      \$15 per frontage metre, plus insurance

Horse Stall                      \$5 for the weekend

(N.B. must be booked and paid for by the end of the weekend with the Secretary)

All Exhibitors (pavilion) will pay gate entrance fee unless holding a Free Entry voucher.

## Conditions of Show

1. Membership closing date 17<sup>th</sup> February 2024.
2. No membership tickets will be sold at the gate.
3. All entry fees shall be stated in the schedule.
4. Late entries for classes will not be accepted.
5. All ring events will be accepted as post entries.
6. Ring events will not be delayed for late competitors.
7. Stewards will remove all exhibitors and other persons from the vicinity of the Judge while judging.
8. Competitors must wear ASA Approved Safety Helmets for all ring events.
9. The Committee reserve the right to alter or amend this program, or to abridge or postpone the gathering in the event of unfavourable weather or from any cause whatsoever.
10. Prize money, ribbons and trophies to be collected on the day of the Show.
11. The decision of the Judges shall be final and any competitor or exhibitor who abuses either Judges or Officials and is found guilty, after enquiry by the Executive, shall be disqualified from further participation in this Show. A report shall be immediately forwarded to the Central Northern Group of Show Societies and Pastoral and Agricultural Associations and will result in the automatic suspension of the competitor or exhibitor from all shows for the remainder of the season.
12. Competitors/exhibitors hereby agree to abide by any decisions of the Society in regard to entries and agree to compete/exhibit at their own risk and to indemnify and keep indemnified the Society against all claims, suits, actions or demands which may be brought against it in respect of any injuries or other losses sustained by them in the course of competing/exhibiting and any events and/or class/es and exonerate Ashford Show Society Inc. from all loss or injury whether from alleged negligence or otherwise.
13. **All competitors/exhibitors are required to have their own Ambulance Cover.**
14. No third-party fund raising will be allowed, without permission from the Show Society.
15. **Ring Events**
  - All horses competing at this Show, compete on the understanding that drug testing may be carried out, and if drugs are detected then penalties will apply.
  - ASA Approved helmets must be worn by all junior and pony club competitors, following the Helmet Safety Standards (ASNZS3838- Under 5 years, EN1384VG1)
  - A waiver form must be signed before any entry is accepted in the ring.

## Event Times

Time	Event
<b>Saturday Morning</b>	
7.30-9.30	Pavilion Entries Accepted
8.00	Horse Events
8.00 (from)	Show Jumping
12MD	Pavilion Open
12MD	Dog Show
<b>Saturday Afternoon</b>	
From 12MD	Sam Handford Entertainment
1pm – 2pm	Lolly Scramble / Egg and Spoon Race/ Sack Race
2pm	Horse Sports Ring
5pm	Ram Rides *
5pm	Poddy Ride * – Ryan Julius Memorial Trophy
<b>Saturday evening</b>	
6pm	<b>Show Official Opening</b> Official opening be TBC
7pm	Open Steer * Ride
7pm	Steer Ride * – Tyson Lavender Memorial
8.15pm	Sam Handford Entertainment
9.30pm	Fire Works
<b>Sunday morning</b>	
8.00	Horse Events
8.00	Show Jumping
8.00	Shearing Competition

\*Subject to availability of stock

**All competitors/ exhibitors are required to have their own Ambulance Cover. The Society will not be responsible for the payment of ambulance treatment/ transport costs. Waiver forms must be signed before events.**

**KYRON THOMPSON FENCING**  
**0499 657 718**

**AND EARTHWORKS**

**Contact: Kyron Thompson ABN 24 781 506 293**

[Kyron01@hotmail.com](mailto:Kyron01@hotmail.com)



**Kyron Thompson Fencing**



**Proud Sponsors of the Ashford Show Open Steer Ride**

**Specialising in:**

**FENCING**

All rural fences  
Colorbond  
Post & Rail  
Cattle yards  
Security/Chain mesh  
Entrances  
All your welding needs

**EARTHWORKS**

Fence line clearing  
Scrub Clearing  
Stick Racking  
Pipe Laying  
Contours & Dams

## Entertainment

### Bucking Bull - Mad Cow Entertainment

#### Ram Ride \*

**Sponsored by Matt Harrison – Builder**

Entry Fee- \$5

Prize money - 1<sup>st</sup> = \$30, 2<sup>nd</sup> = \$20, 3<sup>rd</sup> = \$10

#### Poddy Ride \*

**Sponsored by G & M Julius**

Entry Fee- \$5

Prize money - 1<sup>st</sup> = \$30, 2<sup>nd</sup> = \$20, 3<sup>rd</sup> = \$10

Ryan Julius Memorial Trophy

#### Steer Ride \*

**Sponsored by Kyron Thompson Fencing and Earthworks** Entry Fee- \$10

Prize money - 1<sup>st</sup> = \$300, 2<sup>nd</sup> = \$100, 3<sup>rd</sup> = \$50

**Steer Ride \*** – Tyson Lavender Memorial

**Sponsored by Simone and Trevor Lavender** Entry Fee- \$5 ((12 & under)

Prize money - 1<sup>st</sup> = Belt Buckle +\$50, 2<sup>nd</sup> = \$30, 3<sup>rd</sup> = \$20

\* Subject to availability of stock

### Sam Handford Entertainment

**Sponsored:** by Clunie Range Angus

#### Fire Works

Sponsored by the Ashford Memorial Bowling Club and Ashford Show Society

## Show Dates 2024 – correct at the time of printing

Date	Region
January 26 <sup>th</sup> – 27 <sup>th</sup>	Bundarra
January 26 <sup>th</sup> – 27 <sup>th</sup>	Tenterfield
February 3 <sup>rd</sup>	Uralla
February 9 <sup>th</sup> - 10 <sup>th</sup>	Glen Innes
February 16 <sup>th</sup> -17 <sup>th</sup>	Guyra
<b>February 17<sup>th</sup> - 18<sup>th</sup></b>	<b>Ashford</b>
February 23 <sup>rd</sup> – 25 <sup>th</sup>	Inverell
March 1 <sup>st</sup> – 2 <sup>nd</sup>	Armidale
March 1 <sup>st</sup> – 3 <sup>rd</sup>	Barraba
March 8 <sup>th</sup> – 9 <sup>th</sup>	Walcha
March 8 <sup>th</sup> - 10 <sup>th</sup>	Manilla
April 26 <sup>th</sup> – 27 <sup>th</sup>	Moree
May 9 <sup>th</sup> – 10 <sup>th</sup>	Wyalda
May 18 <sup>th</sup> – 19 <sup>th</sup>	Bingara



## **Ashford Showground - Available for Hire.**

For weddings, birthdays or any celebration!  
Reasonable rates for hire and camping on site.



**Anyone wishing to book the Ashford Showgrounds  
for an event or simply wanting to contact  
the Showgrounds Land Managers – (Trust)**

Please contact the Secretary as below.

Trevor Tindall [Secretary/Treasurer]

Ashford Showgrounds Statutory Land Manager

1276 Wallangra Road, Ashford, NSW. 2361

Email. [rusty-tin@bigpond.com](mailto:rusty-tin@bigpond.com)

Ph. Mob. 0448 811 813

If the Secretary cannot be reached for some reason,

Please try:

David Thompson [President]

Ph. Mob. 0488 507 824

## **ASHFORD MEMORIAL BOWLING CLUB**

**Ph. 02 6725 4202**

Fully air-conditioned . Poker Machines

Pool . Keno . Meals

**OPEN 7 DAYS!**

**Accommodation Available**

**MEALS**

**Friday Night!**

**Saturday!**

**Sunday Lunch!**

**Thursday night Pizza!**

**SOCIAL BOWLS  
WEEKLY!**



**RAFFLES & MEMBERS DRAW**



**COME ALONG AFTER THE SHOW**

**Members, guests & bona fide visitors always welcome!**

## Fireworks



**Internationally and Nationally Acclaimed Pyrotechnics Agents will Present an Outstanding Display of Fireworks**

**Sponsored by Ashford Memorial Bowling Club and Ashford Show Society**

## Fun for all the Kids

Sponsored by Margaret Dowton

### Lolly Scramble



### Egg and Spoon Race



### Sack Race

*Come along and  
have some fun!*



# Wilshire & Co



Stanthorpe • Tenterfield • Deepwater • Mingoola • Texas • Inglewood



## *Proudly Supporting* **The Ashford Show**

**See us for all your Rural Merchandise,  
Animal Health, Chemical, Seed, Fencing,  
Irrigation, Agronomy Services and  
Fertiliser requirements.**



**You'll find us at 33 High St Texas ph 0746 531 400**

**DELIVERING TO ASHFORD AREA TUESDAYS & FRIDAYS**

STANTHORPE  
PH 0746 812 055

TENTERFIELD  
PH 0267 361 406

TEXAS  
PH 0746 531 400

MINGOOLA  
PH 0267 375 312

INGLEWOOD  
PH 0746 521 499

DEEPWATER  
PH 0267 345 081



## **Dog Show**

Saturday 17<sup>th</sup> February 2024

Steward: Desleigh Tindall

Judge: Brodie Verri

Registered and unregistered dogs eligible to compete. All dogs must be on a lead and controlled.

**Entry fee: \$2**

**Entries close 12MD Saturday.**

### **Prizes:**

Dog biscuits donated by Wilshire & Co Texas.

Ribbon for 1<sup>st</sup>, 2<sup>nd</sup>, and 3<sup>rd</sup>. each category

Champion Ribbon for Dog of Show.

### **Categories:**

1. Most unusual pet
2. Best dog (any age or size, judgement based on presentation - assessment of coat, general tidiness, even a costume etc)
3. Best working dog (must display obedience)
4. Best trained or trick dog (must have some ability to do a trick)
5. Grand Champion Dog (must be a winner of one of the previous sections)



**ISUZU  
UTE**



**HYUNDAI**



**F GAUKROGER & SONS**

*Your Driving Future*



**mazda**

**Vivian Street INVERELL NSW 2360**

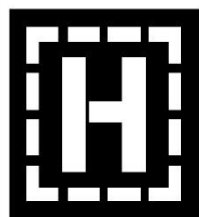
**ph 02 6722 2722 [www.gaukroger.com.au](http://www.gaukroger.com.au)**



# NO.BULL.BUTCHERY

4 Wade St, Inverell NSW 2360

(02) 67221387



**Inverell**

# HARDWARE

**TIMBER & BUILDING SUPPLIES**

**VISIT US AT 37 BRISSETT ST**

The locally owned and operated hardware store.

Get the Right Stuff, Right Price and Right Service. Everytime.

Tel: 02 6721 5721 Fax: 02 6721 5720  
E: [accounts@inverellhardware.com.au](mailto:accounts@inverellhardware.com.au)  
W: [inverellhardware.com.au](http://inverellhardware.com.au)



Find Us On







Lic # MVRL3880

Come see us for your Insurance repairs and  
paintless dent repairs

**15-17 Mansfield Street, Inverell**

**Email:** [admin@mclachlanssmash.com.au](mailto:admin@mclachlanssmash.com.au)

**Website:** [mclachlanssmashrepairs.com.au](http://mclachlanssmashrepairs.com.au)



# KENNARDS

## HIRE

*Make your job EASY!*

**Access**

**Earthmoving**

**Landscaping**

**Trailers**

**Generators**

7am-5pm Monday-Friday, 7am-12pm Saturday

**14 Lawrence St, Inverell**

**PH 67288500**





**FOR DESIGN, SURVEY  
& CONSTRUCTION OF  
EARTHWORKS**

ABN: 32 013 59 726

**A loader is also available for desilting of dams**

**Phone JOHN on**

**0427 254 116**

**or MAREE**

**0438 294 646**

**For All Your Vertebrate  
Pest Control Needs**

ABN: 33 670 637 303



**JOHN AKHURST**

**0427 254 116**

# Show Jumping and Horse Events

Saturday 17<sup>th</sup> and Sunday 18<sup>th</sup> February 2024



# Local Map

## 40km Radius of Ashford refers to all Local Events



## RING EVENTS

- \* IT IS A CONDITION OF ENTRY AT THIS SHOW THAT ALL HORSES COMPETING AT THIS SHOW, COMPETE ON THE UNDERSTANDING THAT DRUG TESTING MAY BE CARRIED OUT AT THIS SHOW, AND IF DRUGS ARE DETECTED THEN PENALTIES WILL APPLY.
- \* IT IS A REQUIREMENT OF THE SHOW COMMITTEE THAT A.S.A. APPROVED SAFETY HELMETS BE WORN BY ALL JUNIOR AND PONY CLUB COMPETITORS, FOLLOWING THE NEW HELMET SAFETY STANDARDS. ASNZS3838 - UNDER 5 YEARS, EN1384VG1.

### COMPETITORS PLEASE NOTE:

A Waiver form must be signed before any entry is accepted in the ring.

This applies to all competitors in all events.

ENQUIRE WITH THE CHIEF STEWARD, OR AT THE OFFICE.



## Inverell Jockey Club

Proud sponsors of the Ashford Show – Show Jumping



[www.inverelljockeyclub.com](http://www.inverelljockeyclub.com)

[info@inverelljockeyclub.com](mailto:info@inverelljockeyclub.com)

Find us on



Facebook and



Instagram



# McGREGOR GOURLAY

*proudly supporting the  
Ashford Show*



**AGRONOMY • AGCHEM • SEED • FERTILISER  
ANIMAL HEALTH & HANDLING EQUIPMENT  
PUMPS • HOME & FARM SUPPLIES  
PET FOOD • STOCK FEED**

**PROUD TO SUPPLY ALL THINGS AG CALL IN TO SEE THE TEAM AT  
MCGREGOR GOURLAY INVERELL, 73 RING STREET, T: 02 6721 6100**

## Show Jump Saturday 17<sup>th</sup> and Sunday 18<sup>th</sup> February 2024

**Steward:** Kylie Baker  
Thompson

**Course Designer:** Pauline



### **Conditions of Entry:**

Show jumping run under EA / FEI Rules.

Helmets must be EA tagged & EA dress code.

Waiver must be signed and armband worn on the wrist to compete.

All entries made on the day at the show jumping ring.

Horses may only enter in 3 consecutive heights on Saturday and 2 on Sunday.

Horse/Rider combinations may only enter in either Junior or Open classes.

Organisers reserve the right to alter or change the programme as needed.

Horses in Class 4 may not enter Class 5 and horses in Class 10 may not enter Class 11 (these classes will be run concurrently ).

Horse/Rider combination may only enter Class 6 or Class 7.

### **Saturday 17<sup>th</sup> February 2024**

Course walk 8.00am Jumping starts 8.30am

Class 1 Height Class 45cms - Article 238 2.2/245.3 Immediate Jump Off (AM7)

**Proudly sponsored by: McGregor Gourlay, Inverell**

**Entry Fee:** \$5

**Ribbons and prizes to 4th**

**Prizemoney:** 1st \$20, 2nd \$15, 3rd \$10, 4th \$5

- 1a Junior Riders Under 13
- 1b Junior Riders 13 and Under 18
- 1c Open Riders 18 and Over

Class 2 Height Class 60cms - Article 238 2.2/245.3 Immediate Jump Off (AM7)

**Proudly sponsored by: Campbell & Freebairn Chemist, Inverell**

**Entry Fee** \$5

**Ribbons and prizes to 4th**

**Prize money:** 1st \$20, 2nd \$15, 3rd \$10, 4th \$5

- 2a Junior Riders Under 13
- 2b Junior Riders 13 and Under 18
- 2c Open Riders 18 and Over

Class 3 Height Class 75cms - Article 238 2.2/245.3 Immediate Jump Off (AM7)

**Proudly sponsored by: McLean Care Inverell**

**Entry Fee:** \$8

**Ribbons and prizes to 4th**

**Prizemoney:** 1st \$40, 2nd \$30, 3rd \$20, 4th \$10

- 3a Riders Under 18
- 3b Open Riders 18 and Over

## Show Jump Saturday 17<sup>th</sup> February 2024 cont...

Class 4 Open Height Class 90cms - Article 2382.2 One Round with Jump Off (AM5).

**Proudly sponsored by: TnJ Store**

**Entry Fee:** \$8

**Ribbons and prizes to 4th**

**Prizemoney:** 1st \$50, 2nd \$35, 3rd \$25, 4th \$10

Class 5 "Off the Track" Height Class 90cms

Article 2382.2 One Round with Jump Off (AM5)

Racing Name and ASB ID Card required for proof of entry

**Proudly sponsored by: Inverell Jockey Club**

**Entry Fee:** \$10

**Ribbons and prizes to 4th**

**Prizemoney:** 1st \$60, 2nd \$35, 3rd \$20, 4th \$10

Class 6 6 Bar Finish Height 80cms

**Proudly Sponsored by: Vital Health**

**Entry Fee:** \$10

**Ribbons and prizes to 4th**

**Prizemoney:** 1st \$60, 2nd \$40, 3rd \$20, 4th \$10

Class 7 6 Bar Starting Height 80cms

**Proudly Sponsored by: NutrienAg Solutions**

**Entry Fee:** \$15

**Ribbons and prizes to 4th**

**Prizemoney:** 1<sup>st</sup> \$150, 2<sup>nd</sup> \$100, 3<sup>rd</sup> \$75, 4<sup>th</sup> \$50



**38 Albury St. ASHFORD - 66 Otho St. INVERELL**

**Sunglasses . Photographs . Baby Care  
Pet Care . Health Care . Toiletries  
Skin Care Products . Giftware  
Sporting & Supporting Bandages**

**02 6725 4013**  
Ashford

**02 6722 3089**  
Inverell

**GET THE JUMP ON HEALTH & BEAUTY**

## **Show Jump Sunday 18<sup>th</sup> February 2024**

Course walk 8.00 am jumping starts at 8.30am

Class 8 Height Class 50cms Article 2382.1 (A2)

**Proudly sponsored by: McGregor and Gourlay Inverell**

**Entry Fee: \$5**

**Ribbons and prizes to 4th**

**Prizemoney:** 1st \$20, 2nd \$15, 3rd \$10, 4th \$5

8a Junior Riders under 13

8b Junior Riders 13 and Under 18

8c Open Riders 18 and Over

Class 9 Height Class 65cms Take your own line

**Proudly sponsored by: Baked by Danelle Inverell**

**Entry Fee: \$5**

**Ribbons and prizes to 4th**

**Prizemoney:** 1st \$20, 2nd \$15, 3rd \$10, 4th \$5

9a Junior Riders under 13

9b Junior Riders 13 and Under 18

9c Open Riders 18 and Over

Class 10 Height Class 80cms - Article 238 2.2/245.3 Immediate Jump Off (AM7)

**Proudly sponsored by: Vet Clinic Inverell**

**Entry Fee: \$8**

**Ribbons and prizes to 4th**

**Prizemoney:** 1st \$40, 2nd \$30, 3rd \$20, 4th \$10

10a Junior Riders Under 18

10b Open Riders 18 and Over

Class 11 "Off the Track " Height Class 80cms -- Article 238 2.2/245.3 Immediate Jump Off (AM7)

Racing Name and ASB ID Card required for proof of entry

**Proudly Sponsored by: Inverell Jockey Club**

**Entry Fee: \$10**

**Ribbons and prizes to 4th**

**Prizemoney:** 1<sup>st</sup> \$60, 2<sup>nd</sup> \$35, 3<sup>rd</sup> \$20, 4<sup>th</sup> \$10

### Prizes

Highest Point Score Rider Under 13 (Events 1,2,8 and 9)  
Will receive the "Let's Showjump" Game.

**Very kindly donated by: John and Pauline Thompson**

Highest Point Score Rider 13 and Under 18  
Will receive a "Jump Sleeve"

**Very kindly donated by: Suzi Mills "The Jump Shack"**

Highest Point Score Open Rider  
Will receive a "Jump Sleeve"

**Very kindly donated: by Suzi Mills "The Jump Shack".**

**Competitors must be on the grounds on Sunday to collect 'Highest Point Score**



INVERELL & WIALDA  
**VET CLINICS**  
*Large & Small Animal Veterinarians*

<b>INVERELL</b> 32 Sweaney Street Ph. 6721 0266	<b>WIALDA</b> 14 Stephen Street Ph. 6729 1015	<b>After Hours Emergencies</b> <b>0427 456 616</b>
---	---	---



Like us on

Facebook

Inverell & Wialda Vet Clinic

[www.inverellvetclinic.com.au](http://www.inverellvetclinic.com.au)



## Horse Events Saturday 17<sup>th</sup> February 2024 Ring One

**Chief steward:** Melissa Willcocks

**Start:** 8.00am

Pic Number must be provided to Office.

Waiver Forms must be signed and presented to Ring 2 Office

Entry & prize money payable at Ring 2 Office, see Trudy Thompson

**Classes 1-12**

**Entry Fee:** \$2

**Ribbons and prizes to 3rd**

**Prizemoney:** 1<sup>st</sup> \$5 2<sup>nd</sup> \$3 3<sup>rd</sup> \$2

**Classes 1-12 Champion \$15 Reserve \$5**

### **Australian Stockhorse Classes**

**Sponsored by:** Border Branch of Stockhorse Society.

**Rider and Horse Must Be Stock Horse Registered**

13yr & U18 yrs

U13yrs

1. Led Stockhorse Mare
2. Led Stockhorse Stallion
3. Led Stockhorse Gelding
4. Led Stockhorse Handler 13 years and Under 18 years
5. Led Stockhorse Handler Under 13 years

**Champion & Reserve Champion Led Stockhorse**

6. Stockhorse Hack Mare
7. Stockhorse Hack Stallion
8. Stockhorse Hack Gelding
9. Stockhorse Hack Ridden by Child 13 years and Under 18 years
10. Stockhorse Hack Ridden by Child Under 13 years

**Champion & Reserve Champion Stockhorse Hack**

11. Working Stockhorse Mare
12. Working Stockhorse Stallion
13. Working Stockhorse Gelding
14. Working Stockhorse Ridden by Child 13 years and Under 18 years
15. Working Stockhorse Ridden by Child Under 13 years

**Champion & Reserve Champion Working Stockhorse**

PROUD SPONSORS  
OF THE ASHFORD  
SHOW &  
CAMPDRAFT

The Team at Vital Health  
would like to thank the  
Ashford community for  
their support!

We look forward to  
helping you to achieve  
your health and  
wellbeing goals within the  
community!

Call our reception  
team on 02 6721 4412  
to make an enquiry

[info@vitalhealthnsw.com.au](mailto:info@vitalhealthnsw.com.au)

6/23 Lawrence Street Inverell NSW 2360

2/125 Bourke Street Glen Innes 2370

At Vital Health we can help  
with:

Weight issues

Heart health

Improving strength & balance

Diabetes or Pre-diabetes

Post-operative rehabilitation

Fine & gross motor skills

Chronic pain

Arthritis

High cholesterol

Neck or lower back pain

Physiotherapy - Dietetics - Occupational Therapy - Speech Pathology - Exercise Physiology

# Nutrien

## Ag Solutions™

..... **WE SPECIALISE IN** .....



AGRONOMY



REAL ESTATE



ANIMAL HEALTH



MERCHANDISE



WOOL



FINANCE



INSURANCE

**(02) 6722 2944**

262 Byron Street Inverell, NSW

NutrienAgSolutions.com.au  
Nutrienharcourts.com.au

**Nutrien**  
Ag Solutions\*

**Nutrien**  
Harcourts

**Buyers and Sellers of Winter & Summer Grains**  
**Full Range of Fertilisers**

Proud sponsors of the Ashford Camp Draft.



**stewarts**  
grain trading

---

**[www.stewartsgrain.com](http://www.stewartsgrain.com)**

---

**(02) 6725 4635**

**David Stewart**  
**David Stewart Jnr**

**0427 254 478**  
**0427 248 178**

**Robert Quinn**

**0400 686 991**

## **Stock Horse Challenge Saturday 17<sup>th</sup> February – Sunday 18<sup>th</sup> February**

**Steward:** Melissa Willcocks – 0427 615 002

**To be run over 2 days, starting at the completion of the Stockhorse Classes on Saturday**

### **Rules & Regulations:**

Will be run under Australian Stockhorse Challenge Rules.

Horses DO NOT have to be ASH Registered to compete.

Pic Number must be provided to Ring 2 Office.

Waiver Forms must be signed and presented to Ring 2 office before competing.

Entry & prizemoney payable at Ring 2 office.

If asked you will be required to show proof of age of horse

**Entry Fee:** \$50 (\$20 back to prize pool)      \$20 – Junior Stock Horse Challenge U18

**Nominations:** Open - 9am, Wednesday, 1<sup>st</sup> February by phone to Steward  
Close – 9pm, Friday, 9<sup>th</sup> February 2024

**Scratchings are to be made 7 days prior to competition**

**Events:** - 4 Years & Under Horses

- 5 Years & Over Horses

- Junior Stock Horse Challenge U18

### **Saturday, 17<sup>th</sup> February**

#### **- Led Classes**

1) 4 Years & Under – LED – LP5

2) 5 Years & Over – LED – LP 3

3) Junior Stock Horse Challenge – LED – LP 1

#### **- Hack Classes**

1) 4 Years & Under – HACK – HP 1

2) 5 Years & Over – HACK – HP 7

3) Junior Stock Horse Challenge – HACK – HP 1

## **Stock Horse Challenge Saturday 17<sup>th</sup> February – Sunday 18<sup>th</sup> February**

### **Sunday, 18<sup>th</sup> February – 8am Start**

- **Working Horse**
  - 1) 4 Years & Under – WORKING – WP 1
  - 2) 5 Years & Over – WORKING – WP 5
  - 3) **Junior Stock Horse Challenge – Working – WP 1**
  
- **Time Trial**
  - 1) 4 Years & Under – UTILITY TRIAL – UP 2
  - 2) 5 Years & Over – TIME TRIAL – TTP 2
  - 3) **Junior Stock Horse Challenge – UTILITY TRIAL – UP 1**



**Proud sponsor of the Stock Horse Challenge**

**LANDRIGAN  
PREG TEST SCANNING  
AND CONTRACTING**

**0 4 2 8   6 5 2   5 2 5**



- Ultrasound preg testing
- Fast & efficient
- Low stress stock handling
- Cost effective with reasonable rates

[landriganpregtest@yahoo.com](mailto:landriganpregtest@yahoo.com)



Find us on



**Proud sponsors of the Ashford Show Horse Events**

## **Horse Events Saturday 17<sup>th</sup> February 2024 Ring One**

**Chief steward:** Melissa Willcocks

**Start:** approx. 1pm

Entries taken from 8am in Ring 2 Office

Pic Number must be provided to Office.

Waiver Forms must be signed and presented to Ring 2 Office

Entry & prize money payable at Ring 2 Office, see Trudy Thompson

**Classes 1-18      Entry fee:** \$4      **Prize money:** 1<sup>st</sup> \$10, 2<sup>nd</sup> \$6, 3<sup>rd</sup> \$4

**Classes 19-21      Entry fee:** \$5      **Prize money** 1<sup>st</sup> \$50, 2<sup>nd</sup> \$30, 3<sup>rd</sup> \$10

**Ribbons and prizes to 3rd**

### **Sporting Events**

1. Bending Race Under 7 years
2. Bending Race 7 & Under 9 years
3. Bending Race 9 & Under 11 years
4. Bending Race 11 & Under 13 years
5. Bending Race 13 & Under 15 years
6. Bending Race 15 & Under 17 years
7. Flag Race Under 7 years
8. Flag Race 7 & Under 9 years
9. Flag Race 9 & Under 11 years
10. Flag Race 11 & Under 13 years
11. Flag Race 13 & Under 15 years
12. Flag Race 15 & Under 17 years
13. Barrel Race Under 7 years
14. Barrel Race 7 & Under 9 years
15. Barrel Race 9 & Under 11 years
16. Barrel Race 11 & Under 13 years
17. Barrel Race 13 & Under 15 years
18. Barrel Race 15 & Under 17 years
19. Open Bending Race
20. Open Flag Race
21. Open Barrel Race

**If time permits Novelty Events will run**



## **Horse Events Saturday 17<sup>th</sup> February 2024 Ring Two**

**Chief steward:** Melissa Willcocks

**Start:** 8.00am

Pic Number must be provided to Office.

Waiver Forms must be signed and presented to Ring 2 Office

Entry & prize money payable at Ring 2 Office, see Trudy Thompson

**Classes** 1-22

**Entry fee:** \$3

**Prize money:** 1<sup>st</sup> \$10, 2<sup>nd</sup> \$6, 3<sup>rd</sup> \$4

**Ribbons and prizes to 3rd**

### **Led Classes**

1. Pony Mare not exceeding 14 hands
2. Pony Gelding not exceeding 14 hands
3. Galloway Mare, 14 to 15 hands
4. Galloway Gelding, 14 to 15 hands
5. Hack Mare, over 15 hands
6. Hack Gelding, over 15 hands

**Champion Led Exhibit**

**Reserve Champion Led Exhibit**

### **Rider Classes**

7. Boy Rider under 7 years
8. Girl Rider under 7 years
9. Boy Rider 7 and under 9 years
10. Girl Rider 7 and under 9 years
11. Boy Rider 9 and under 11 years
12. Girl Rider 9 and under 11 years
13. Boy Rider 11 and under 13 years
14. Girls Rider 11 and under 13 years
15. Local Rider under 13 years. Refer to local map
16. Pair of Riders under 13 years

**Champion & Reserve Champion Boy Rider Under 13 Years**

**Champion & Reserve Champion Girl Rider Under 13 Years**

## **Rider Classes...cont.**

17. Boy Rider 13 and under 15 years
18. Girl Rider 13 and under 15 years
19. Boy Rider 15 and under 17 years
20. Girl Rider 15 and under 17 years
21. Local Rider 13 and under 17 years
22. Pair of Riders 13 and under 17 years

**Champion & Reserve Champion Boy Rider 13 & Under 17 Years**

**Champion & Reserve Champion Girl Rider 13 & Under 17 Years**

**Supreme Champion Rider of The Show Under 17 Years**

**Sponsored By Northwest Saddlery, Plus Voucher**

## **CATERING FOR ALL YOUR HORSE NEEDS**



## **For Inverell and Surrounding Districts**

**Equestrian Supplies . Quality Country Clothing  
Hats . Caps . Handbags . Saddles . Rugs . Tack**

**Pam & Jodie: Phone 6722 1229**

**HORSEMAN'S SUPERMARKET**

## Horse Events Sunday 18<sup>th</sup> February 2024 Ring Two

**Chief steward:** Melissa Willcocks

**Start:** 8.00am

Pic Number must be provided to Office.

Waiver Forms must be signed and presented to Ring 2 Office

Entry & prize money payable at Ring 2 Office, see Trudy Thompson

**Classes 1-29**

**Entry Fee:** \$3

**Ribbons and prizes to 3rd**

**Prizemoney:** 1<sup>st</sup> \$10 2<sup>nd</sup> \$6 3<sup>rd</sup> \$4

1. Maiden Pony Hack not exceeding 14 hands
2. Novice Pony Hack not exceeding 14 hands
3. Pony Hack not exceeding 12 hands
4. Pony Hack 12 hands and not exceeding 13 hands
5. Pony Hack 13 hands and not exceeding 14 hands

**Champion & Reserve Champion Pony Hack (Eligible Classes 1 -5)**

6. Educated Pony Hack not exceeding 14hands
7. Pony Hack Ridden by a child under 17years
8. Pair of Pony Hacks
9. Pleasure Pony Hack – no whip or spurs
10. Maiden Galloway Hack 14 hands and not exceeding 15 hands
11. Novice Galloway Hack 14 hands and not exceeding 15 hands
12. Galloway Hack 14 hands and not exceeding 14.2 hands
13. Galloway Hack 14.2 hands and not exceeding 15 hands

**Champion & Reserve Champion Galloway Hack (Eligible Classes 10-13)**

14. Educated Galloway Hack 14hands not exceeding 15hands
15. Galloway Hack ridden by a child under 17years
16. Pair of Galloway Hacks
17. Pleasure Galloway Hack – no whip or spurs
18. Maiden Hack over 15 hands
19. Novice Hack over 15 hands
20. Hack 15 and not exceeding 15.2 hands
21. Hack 15.2 and not exceeding 16 hands
22. Hack over 16 hands

**Champion & Reserve Champion Hack (Eligible Classes 18 -22)**

- 23. Lady Rider
- 24. Gentleman Rider
- 25. Educated Hack over 15hands
- 26. Hack ridden by a rider under 17years
- 27. Pair of Hacks
- 28. Pleasure Hack – no whips or spurs
- 29. Consolation Hack any height – not won a 1<sup>st</sup> or 2<sup>nd</sup> at this show.

**Grand Champion Hack of the Show Plus \$30.**

**Combo Rug for Champion of Each Hack.**

**Sponsored by: Bakers Barn Saddlery**



**45-47 Vivian St.**  
**Phone: 02 6722 3599**

**find us on facebook** 



# Mountain Valley

*~ Quality & Consistency ~*

Poll Herefords ~ Angus ~ Suffolks ~ White Suffolks

*The place to buy your next bull!*

- **Black Stump Sale** – Blackall Tuesday 19<sup>th</sup> March 2024
- **Annual on property Bull Sale** - Saturday 20<sup>th</sup> July 2024

Ian & Shelley Durkin - Ph: 0427299012  
“Mountain Valley” 1220 Coolatai Rd, Coolatai  
NSW

[www.mountainvalleystud.com.au](http://www.mountainvalleystud.com.au)



**Mountain Valley**

*- Quality & Consistency -*

Poll Herefords ~ Angus ~ Suffolks ~ White Suffolks

# Wool In Grease

Friday 16<sup>th</sup> – Saturday 17<sup>th</sup> February 2024





**3/137 BYRON STREET, INVERELL**

Weekly Fat Sheep & Cattle Sales

Monthly Store Stock Sales

Paddock Sales of Fat & Store Stock

**inverell@awn.net**

**PHONE - 02 6722 2588**

AFTER HOURS

TERRY PYNE - 0447 231 411 \* TOM OAKES - 0409 901 930

ROBBIE BLOCH - 0409 191 229 \* PHIL HURFORD - 0428 233 260

WILL CLARIDGE - 0428236930

**Proud Sponsors of the Wool Pavilion**

## Wool In Grease

Steward: Gilbert Fitzhannim 0428195501

Wool to be received at the wool pavilion between 2pm – 5pm on Friday 16<sup>th</sup> February 2024.

Judging of the wool to commence 8am Saturday 17<sup>th</sup> February. The pavilion will be closed during judging.

### Conditions of Entry:

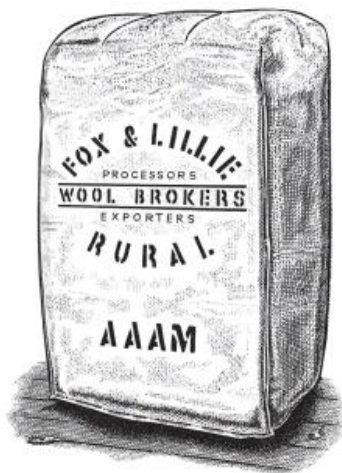
1. Judges decision will be final, and no correspondence will be entered into.
2. All entries, including ram fleeces, to be skirted.
3. All merino flock wool to be grown 2022 - 2023 season by the exhibitor and to be from *unrugged* and *unhoused* sheep.
4. Stud ewe and ram fleece eligible only in stud classes and grown in 2022 -2023 season.
5. No exhibit will be allowed to compete in more than one class.
6. Exhibitor must attach an entry tag to each fleece, showing name, address, division and class number.
7. Wool with be received and stored at the owner's risk.
8. The judge is empowered to move fleeces which he/she considers are entered in the wrong class.
9. The following scale of points will be awarded in judging:

<b>Trueness to type</b>	10	<b>Evenness</b>	10	<b>Character</b>	10
<b>Length</b>	10	<b>Soundness</b>	10	<b>Softness</b>	8
<b>Density</b>	6	<b>Colour</b>	6	<b>Top &amp; Nail</b>	30

making a total of 100 points

10. Properties that are registered Merino Studs are not eligible for entry in Divisions 1-4. Class 15 not eligible for Grand Champion.





## SUPPORT YOUR LOCAL STORE AND DEAL WITH AN AUSTRALIAN BUSINESS FAMILY OWNED FOR OVER 70 YEARS

Fox & Lillie is one of Australia's largest wool buyers, brokers, exporters and processors, providing woolgrowers with a range of comprehensive selling options and expert market advice.

Specialised wool marketing options	Extensive wool market information	Increased supply chain traceability	Retail brand partnership opportunities	Genesys programme – Sustainable Contracts

### FOR LOCAL SERVICE AND SOUND WOOL MARKETING ADVICE, CONTACT:

Scott Hallam - 0428 223 550 Inverell Store - 02 6722 3550  
126 Ring Street, Inverell, NSW 2360

### ADDITIONAL WOOL STORE LOCATIONS AND DELIVERY POINTS

**NSW:** Uralla. Wagga Wagga. Wellington. Culcairn. Dareton (Mildura). Tamworth. West Wyalong. Corowa. **VIC:** Melbourne. Melton. Skipton. Hamilton. Casterton. **SA:** Adelaide. **QLD:** Brisbane.

[foxandlillie.com.au](http://foxandlillie.com.au)

[foxlillierural](https://www.facebook.com/foxlillierural)

[foxandlillierural](https://www.instagram.com/foxandlillierural)

## Merino Wool Classes

Entry fee: \$1.00

Prizes for each Category kindly donated/ provided by the sponsors listed.

Ribbons also given for 1<sup>st</sup>, 2<sup>nd</sup> and 3<sup>rd</sup>.in each category.

<b>Category</b>	<b>Sponsor</b>
<b>Grand Champion Fleece of Show</b>	Notley's Wool Store
<b>Champion Fleece (from Classes 1-4</b>	Doug and Cherie Beveridge
<b>Reserve Champion Fleece (from Classes 1-4)</b>	Schute Bell (Inverell)
<b>Best Local Fleece</b>	PD & RA Goddard
<b>Champion Ram's Fleece (Classes 9-11)</b>	St Hilary Merinos
<b>Champion Ewe's Fleece (Classes 12-14)</b>	AWN Squires
<b>Champion Weaner Fleece</b>	NutrienAg S olutions
<b>Champion Pair Merino Fleeces (Classes 6-8)</b>	AWN (Australian Wool Network)
<b>Best Donated Fleece</b>	Thompson Family (David and Warren)
<b>Most Successful Exhibitor (Classes 1-4)</b>	Gilbert Fitzhannim

Any exhibitor wishing to donate their fleece or fleeces may do so. The entry fee for that fleece will be waived. All proceeds from the sale will go to improvements to the grounds.

### We would like to acknowledge our generous sponsors

- AWN – Australian Wool Network
- AWN Squires
- Doug and Cherie Beveridge
- Gilbert Fitzhannim
- Notleys Wool Store
- NutrienAg
- PD and RA Goddard
- Schute Bell (Inverell)
- St Hilary Merinos
- Thompson Families

# **NOTLEY'S WOOL STORE & FIBRE TESTING.**

**99 LAMBETH STREET. GLEN INNES.**

Ph: 02 6732 1609 Fax: 02 6232 1995

**Wool Buyers  
Large and Small Lots**

## **St Hilary Merinos**

**Pure Egelabra blood & Airlie blood polls  
Rams bred locally for the  
Ashford & Inverell district**

**Call Spike Wall**

**02 6725 5677 - 0459 255 677**

### **Merino Flock Sheep Classes 1-4 - to be judged on commercial value.**

1. One merino fleece - super fine
2. One merino fleece – fine
3. One merino fleece – medium
4. One merino fleece – strong
5. Best local fleece- must be grown within 40kms of Ashford

### **Open Classes 6-8 - to be judged on commercial value**

6. Pair of merino fleeces - superfine
7. Pair of merino fleeces - fine
8. Pair of merino fleeces – medium

### **Stud Ewe & Ram Classes**

9. One Merino ram fleece - superfine
10. One merino ram fleece – fine
11. One merino ram fleece – medium
12. One merino ewe fleece – superfine
13. One merino ewe fleece - fine
14. One merino ewe fleece - medium
15. One merino ram fleece not grown on property

### **Merino Weaner Class**

16. Merino weaner fleece, any quality showing lamb tips

## Schute Bell Badgery Lumby



**Wool Brokers - Stock & Station Agents - Real Estate Agents  
Livestock Marketing - Finance Providers & Insurance Agents**

### Wool Selling Options:

- Futures & forward contracting
- Auction
- Private Treaty
- Siralon Fleecescan & Laserscan
- Objective classing with accurate results
- Electronic marketing 24 hours 7 days

**Office 1 Wyndham St, INVERELL 2360 (PO Box 393)**

Bridget Body or Melissa Goodman

Ph: 02 6722 1888 Fax: 02 67224966

Iain Goddard 0427 641 452

Jim Brown 0428 256 995

Phil Evans 0429 632 523

[www.schutebell.com.au](http://www.schutebell.com.au)

## FRAME RURAL AGENCIES

**Livestock & Property Agents**

**Marketing & expertise for the rural industry  
with over 30 years experience servicing the  
Inverell & Blackall districts and beyond**

*Weekly Fat Cattle & Fortnightly Sheep Sales*

*Fortnightly Store Cattle Sales*

*Auctions Plus & Private Cattle & Sheep Sales*

108-110 Warialda Rd, Inverell NSW

**Phone : 02 6722 3886**

**[www.frameruralagencies.com.au](http://www.frameruralagencies.com.au)**

**[Office@frameruralagencies.com.au](mailto:Office@frameruralagencies.com.au)**



**Philip Frame . Director . A/H 02 6722 1610 . 0427 221 610**

**Beau Frame . Blackall . Livestock Agent . 0428 221 623**

**rmanetwork.**

**Accredited Member**

# Severn River Shears

Sunday 18<sup>th</sup> February 2024



# SAPPHIRE CITY STEEL & PIPE

*"one stop gets the lot"*

180 ASHFORD ROAD

INVERELL PH. 02 6722 1844

**PROUD SPONSOR OF THE ASHFORD CAMP DRAFT  
AND THE ASHFORD SEVERN RIVER SHEARS EVENT**

[www.sapphirecitysteel.com.au](http://www.sapphirecitysteel.com.au)



[www.facebook.com/SapphireCitySteelPipe](http://www.facebook.com/SapphireCitySteelPipe)



# 3M



## WE STOCK

**STEEL: FLAT, SQUARE, ROUND,  
RHS, PIPE, TUBE, RAIL, SHEET**

**STAINLESS FLAT, ROUND, RHS,  
TUBE & SHEET PRODUCTS**

**ALUMINIUM EXTRUSIONS & SHEET  
CATTLE HANDLING EQUIPMENT**

**INDUSTRIAL PAINTS**

**INDUSTRIAL LUBRICANTS**

**3M & PFERD ABRASIVES**

**PERSONAL PROTECTIVE GEAR**

**UNIMIG WELDING & CUTTING**

**THREADING TOOLS & DRILLS**

**LARGE RANGE OF NUT & BOLTS**

**COMPREHENSIVE RANGE OF  
TRAILER PARTS**

## WE DELIVER EVERYWHERE IN THE NORTH WEST

# Severn River Shears

## Sports Shear NSW Incorporated

Sunday 18<sup>th</sup> February 2024 Commencing 8am

Contact: Derrin Keane 0417626876

### Entry fee:

Novice - \$30, Intermediate - \$35, Senior - \$35, Open - \$40

**Prize:** 1<sup>st</sup> – 4<sup>th</sup> ribbons for all.  
All competitors receive a singlet

### Programme

1. Novice
  2. Intermediates
  3. Senior
  4. Open
- On ground camping facilities available.

### We would like to acknowledge our generous sponsors of the Severn River Shears

Ali Wilks  
Bakers Barn  
Campbell Freebairn Chemist  
CMAT Contracting  
Derrin Keane Contract Mustering  
Doug & Cherie Beveridge  
Inverell Vet Clinic  
J & M Irwin Contracting  
JH Holdings  
Julius Grazing  
Kenway & Clark  
Lemani Merinos  
NutrienAg  
St Hilary Merinos  
Symons Livestock & General Transport  
Sunhaven Hostel  
Top Gun Shearing Supplies  
Sapphire City Locksmiths  
Sapphire City Steel & Pipe



# Derrin Keane

Contract Stock Work  
Sheep & Cattle



All own gear -  
Horses, Bikes, Dogs

**Ph 0417 626 876**

## SUNHAVEN HOSTEL

Kneipp St,  
ASHFORD NSW



Ashford Ageing Care Facility Inc. (Trading as Sunhaven Hostel),  
has been providing quality aged care since 1993.

Sunhaven is an 18 bed facility situated in the small village of  
Ashford, and caters for all individuals, as well as couples.

The Facility reflects the rural lifestyle of the surrounding district  
with a homestead design and native gardens.

**Ph: 02 6725 4223 - Fax 02 6725 4148**



email: [manager@sunhavenhostel.com.au](mailto:manager@sunhavenhostel.com.au)



**9-11 Byron Street, INVERELL**

**Ph 02 6722 2283**

**Email: [office@lehmanstock.com.au](mailto:office@lehmanstock.com.au)**

**Web: [www.lehmanstock.com.au](http://www.lehmanstock.com.au)**

## **STOCK & PROPERTY AGENTS, AUCTIONEERS**

**Weekly Prime Cattle Sales**  
**Fortnightly Prime Sheep & Lamb Sales**  
**Monthly Store Cattle Sales**  
**Private & Paddock Sales**  
**Auctions Plus Sales**  
**Clearing Sales**

### **Contact**

**Ben Lehman 0427 211 327**

**Darcy Brennan 0478 164 772**

## **THE FIRST-EVER HILUX GR SPORT**

**MORE TORQUE. MORE POWER. MORE HILUX.**



Introducing our most performance-focused diesel Hilux to ever hit Australia. Inspired by Dakar DNA, the GR Sport delivers an increase in power and torque thanks to its 2.8L turbo engine. Sporting 17" alloy wheels and high-performance front rear suspension – it's tuned to take on more. Amplify your adrenaline and your adventure with off-road features including heavy-duty rock rails, skid plate and aluminium sports pedals. Experience the First-Ever Hilux GR Sport for yourself. Visit your local Toyota Dealer or go to [toyota.com.au/Hilux](http://toyota.com.au/Hilux).

New England Toyota

179-185 Byron Street, Inverell T. 02 6721 7000 [newenglandtoyota.com.au](http://newenglandtoyota.com.au) Lic. No. MD071585

OH WHAT A FEELING

T2023-0000000

## **New England Toyota**

**179-185 Byron Street, Inverell**

**Telephone: 02 6721 7000**

**[newenglandtoyota.com.au](http://newenglandtoyota.com.au)**

## **OH WHAT A FEELING**

Dealer Lic. Number Md071585

**Servco Australia Tamworth Pty Ltd**



# Crowies

*We know Paint!*

**We'll help you get it right  
and finish like a pro!**

Whatever you're painting...

Houses

Roofing

Concrete flooring

Commercial buildings

Shedding

Agricultural bins

Farm equipment

Fences

Wineries

Marine

Driveways

187 Byron St, Inverell NSW ph 02 6722 5812

[www.crowiespaints.com.au](http://www.crowiespaints.com.au)

**10% OFF**  
EVERYTHING  
WHEN YOU JOIN  
CROWIES CLUB

Now, that's  
something to  
crow about!



# Inverell Auto Glass



**TRUST THE LOCAL EXPERTS IN GLASS**

Windscreens . Body Glass Repairs . All Insurance Work  
Plastic Welding . Auto Lam Cut to Size . Perspex Cut to Size  
Window Tinting: Car, Home & Office



**02 6722 5976**

[info@inverellautoglass.com.au](mailto:info@inverellautoglass.com.au)

Lic. Number NTIS\*90260

## ARLINGTON INVERELL

67 Oliver Street, Inverell

[sales@arlingtongasweld.com.au](mailto:sales@arlingtongasweld.com.au)

**SERVICING NEW ENGLAND & THE NORTH WEST SINCE 1977**

**Electric Motor Rewinding and Sales Specialists**



**Pool, Irrigation & Pressure Pump Repairs**  
**DAB** Pump Sales, Pressure Washer Sales & Service

**WELDER, GENERATOR, POWER TOOLS, NAILGUNS**  
**ENGINEERING TOOLS SALES & REPAIRS.**

**Ph: 02 6722 3151 - 02 6722 3147**  
**A/H 67232831**



# Lennon's Butchery

170 Otho St Inverell

Open Mon - Fri 7am - 6pm & Sat 7am - 1pm

- Beef
  - Pork
  - Lamb
  - Chicken
  - Game Meats
  - Meat Packs
  - Pre-prepared meals
  - Bulk Buys
  - Bread & Milk
  - Flavoured Sausages
- + Little extras to make your meal special



*We can help make every  
mealtime very easy with our  
large selection of tasty meats  
and meal ideas*



Ph 6722 1045

[www.lennonsbutchery.com.au](http://www.lennonsbutchery.com.au)

## K PAUL MECHANICAL



PHONE

**0498 254 391**

ABN: 59269099145  
MVRL 56242

Book Services      Pink Slip / Rego Checks  
Small Engines to Large Machines  
Wheel Alingments, Tyre fitting, balancing and Repairs

**1533 Bukkulla Road ASHFORD**

Contact **KEL** - [kelvin67paul@gmail.com](mailto:kelvin67paul@gmail.com)

# ARGYLE FREIGHTERS

For Livestock & General Carrying

**24ft Tray Cattle Float**

**\* Cartage of up to 8,000ltrs of drinking water \***

**Bob & Kim Meale - ph. 0419 819 892**

**"ARGYLE", Bonshaw Road, ASHFORD**

## Campbell's Fuel Service

bp



ASHFORD ROAD, INVERELL

PO BOX 361, INVERELL 2360

PHONE 02 6722 1530 (Depot)

FAX 02 6722 1767

**AFTER HOURS**

Stewart 0427 374 513



**COMBINED  
FREIGHT**

190 EVANS STREET, INVERELL, NSW 2360

**Ph 02 6722 1979.**

**Deliveries to Ashford every Monday  
Wednesday and Friday afternoon**

*We can also organise pickups and deliveries around Australia.*



# V & S THOMPSON TRANSPORT

NOW WITH 24FT TRAY AND  
ANTI-BRUISE CATTLE FLOAT

STOCK FEED CARTAGE  
IN BULK OR BAGS

PHONE (02) 6725 8745

MOBILE 0427 628 859

## Potter's Petroleum Pty Ltd

Proprietors: B.R. & T.A. Potter



### Bulk Fuel Distributors

#### ***Supplying:***

- Bulk Fuel Deliveries up to 50,000 litres
- Royal Lubricants
- Steel Supplies
- Elgas
- Super Charge Batteries

4 St John Street  
Texas QLD 4385

**Phone: 07 4653 1246**

Brad's Mobile: 0428 747 189

Rod's Mobile: 0429 646 513

Facsimile: (07) 4653 1137

Email: [potterspetroleum@westnet.com.au](mailto:potterspetroleum@westnet.com.au)

*Proud to be a sponsor of the ASHFORD SHOW !!*

# REGIONAL ▶GROUP

112 Rifle Range Road INVERELL NSW 2360

ALL MATERIALS CAN BE DELIVERED, OR COLLECTED FROM THE QUARRY SITE.

**Quarry Rock**  
**Aggregate**  
**Select Fill**  
**Concrete Mix.**

**Ph: 02 5852 1800**

**Mob: 0476 651 097**

DarrylMarks@regionalgroupaustraliacom.au  
www.regionalgroupaustralia.com.au

## SIMPSON'S SAPPHIRE CITY PANELBEATING

**ENGINEERING & SHEET-METAL FABRICATION  
& HEAVY VEHICLE REPAIRER.**

David Simpson . Proprietor



Abrasive Blasting . Engineering & sheet-metal Fabrication.  
Heavy vehicle Repairs, Smash repairs.  
24 Hour Towing.

**Ph 02 6722 3788**

sapphirecitypanelbeating@gmail.com





ESTABLISHED  
1986

**FOR ALL LIVESTOCK & REAL ESTATE SALES**

# John Mair & Co

LICENSED AUCTIONEERS LIVESTOCK PROPERTY  
& REAL ESTATE AGENTS

LOCALLY OWNED & OPERATED

78 Otho Street Inverell

02 6722 3870

[johnmair.com.au](http://johnmair.com.au)

**Contact: John Mair 0428 326 943**

**Matt Mair 0428 224 831**

**Beck Mair 0429 405 561**

Weekly Fat Cattle Sales.

Fortnightly Sheep & Lamb Sales.

Rural & Residential Property Sales.

Clearing Sales. Auction Plus.



**Experts to provide you with all aspects  
of your farm business, including  
Livestock, Wool, Grain and Farm Supplies.**

**Technical Services, Financial Services,  
Rural & Urban Real Estate & Insurance.**

**We have been in business  
for over 175 Years.**

**We are an Integral Part of  
Australian Agriculture.**

Our contact details:

**276 Bryon Street, Inverell**

**Telephone 02 6721 7700**

**Fax 02 6721 7755**

# Inverell Ford

**199 BYRON STREET INVERELL**



**Phone (02) 6722 1433**

**Fax (02) 6722 5316**

**[sales@inverellford.com.au](mailto:sales@inverellford.com.au)**

**DLN MD 093772**



55 Vivian Street

## **CARS . 4WD's . TRAILERS NEW AND SECONDHAND PARTS**

**Ph 02 6722 2983 . Fax 02 6721 5040**

Email: [parts@byronsparesinverell.com.au](mailto:parts@byronsparesinverell.com.au)

**Proprietors: Tim and Julie Ellis**

## **INVERELL POWER FARM CO PTY LTD**

287-295 BYRON ST, INVERELL NSW 2360

PH: 0267 223388

EMAIL: [sales.admin@inverellpowerfarm.com](mailto:sales.admin@inverellpowerfarm.com)

**NEW HOLLAND**  
AGRICULTURE

**NEW HOLLAND**  
CONSTRUCTION

**AGENTS FOR:**

- CHALLENGE
- FLEXICOIL
- TORO
- STRAUTMANN
- HARDI
- DIGGA
- DAKEN
- WOODS SLASHERS

**AFTER HOURS:**

**SALES**

GRAHAME LEE 0427 456 696  
ROD MASON 0427 694 125

**PARTS**  
0447 431 116

**SERVICE**  
0436 948 831

Barry (Fred) Minos  
Ph. 0428 254 189



Franna Crane Hire

ABN38 358 661 796



# INVERELL

## 4WD CENTRE

250 Byron St Inverell

Ph 02 6721 2516  
Fax 02 6721 2560



4X4 ACCESSORIES

OLD MAN EMU SUSPENSION

WARN WINCHES

ARB INTENSITY LEDs

OUTBACK SOLUTIONS

RHINO RACKS

THULE RACKS

MICKEY THOMPSON TYRES



[sales@inverell4wd.com.au](mailto:sales@inverell4wd.com.au)



# Run with Deere. Live the dream.



Equipment sales,  
parts, service  
and field support.

LARGE TRACTORS  
GATOR UTILITY VEHICLES  
MOWERS  
UTILITY TRACTORS  
PLANTERS  
SLASHER & IMPLEMENTS

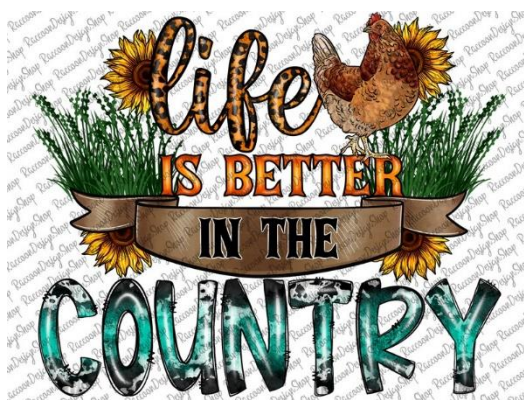


Enquire today | 07 6728 2800 | 12 Swanbrook Rd, Inverell NSW 2360

[RDOequipment.com.au](http://RDOequipment.com.au)

# Main Pavilion

Saturday 17<sup>th</sup> February 2024



## Main Pavilion Sections

Chief Steward: Kirsty Beveridge

Mobile: 0476890255

Pavilion entries open 7.30am – 9.30am.

No late entries will be accepted.

All exhibitor entries to be collected between 6pm – 7.30pm (Saturday).

### Conditions:

Pavilion will be closed for 2 hours from 10am – 12pm for judging.

The decision of the judges will be final. Abuse of judges or officials may result in disqualification from further participation in the Ashford Show subject to Committee inquiry.

Prize money can be collected from the Secretary Office on Saturday from 2pm – 4pm.

All entries must be bonafide work of the exhibitor. All care will be taken of the exhibitors entries which are submitted at the owners risk. Please be aware that the pavilion may be subject to dust.

Open and Junior classes are open to anyone, unless otherwise stated in the section.

Exhibits/entries, prizes, ribbons and certificates to be collected before 7.30pm Saturday.

Items not collected will not be the responsibility of the Show Society.

**N.B. All Entry Forms must be completed by the exhibitor when entering items.**

***N.B. Where a Section Steward is not listed (still to be confirmed), any queries please call: Chief Steward- Kirsty Beveridge Mobile: 0476890255***



## Produce

**Steward:** TBC

**Entry fee:** 50c per entry

**Prize money for the Open and Junior Champion and Open and Junior Highly Commended Award kindly donated by TnJ Store.**

**Memorial John Pintus Trophy (shield) for Most Successful Produce Exhibitor.**

## Produce - Open Class

**Open Prizes:** 1st - \$3 plus certificate, 2<sup>nd</sup> = \$1 plus certificate, 3<sup>rd</sup> = certificate

**Open Champion** - \$30 plus ribbon    **Highly Commended** - \$15 plus certificate

## Categories

1. Best cucumber (any variety)
2. 4 tomatoes
3. 1 Jap pumpkin
4. 1 butternut pumpkin
5. 1 Queensland blue pumpkin
6. Any other pumpkin
7. 4 onions
8. Best watermelon (any variety)
9. Best rockmelon
10. 4 zucchini
11. 2 squash
12. 6 carrots
13. 6 hen eggs
14. Collection of herbs
15. 4 pieces of fruit (one variety)
16. 4 pieces of stone fruit
17. Bunch of grapes (any variety)
18. Beans or peas (any variety)
19. 4 potatoes
20. Cabbage/cauliflower or broccoli
21. Soup vegetables (e.g. Swede, parsnip)
22. Any other vegetable



# **TnJ STORE ASHFORD**

48 MARTYN STREET



## **GENERAL STORE**

**PH: 0267254397**

GROCERIES, FROZEN MEAT, BREAD & MILK, COLD DRINKS,  
ESPRESSO COFFEE, CAKES, FRUIT & VEGE, MILKSHAKES,  
TELSTRA CREDIT & PHONES, GAS REFILL, & PET SUPPLIES



## **PIZZA'S**

**TOASTED SANDWICH**

**PIES & SAUSAGE ROLLS**



OPEN 6 DAYS A WEEK  
MON – FRI = 7:00am – 8:00pm  
SAT = 8:00am - 1pm  
SUNDAY = CLOSED

*Proud Sponsors of the Ashford Show Pavilion and Horse Events*

## Produce - Junior Class

**Entry fee:** 50c per entry

**Junior Prizes: Prizes:** 1st - \$3 plus certificate, 2<sup>nd</sup> = \$1 plus certificate, 3<sup>rd</sup> = certificate

**Junior Champion:** \$20 plus ribbon

**Junior Highly Commended Award** \$10 plus certificate

## Categories

1. 6 hen eggs
2. Vegetable or fruit art
3. Vegetable or fruit grown by yourself
4. Unusual or interesting shaped item (fruit or veg)

## FOODWORKS – Supermarket Texas

62-68 High Street, TEXAS, QLD, Australia • 4385

(07) 4653 1499

Website: [www.foodworks-texas.myfoodworks.com.au/](http://www.foodworks-texas.myfoodworks.com.au/)

Groceries, Deli, Fruit and vegetables

Garden nursery, Homewares

Electrical appliances, Toys and gifts

Opening hours: Monday to Friday 8am to 6.30pm

Saturday and Sunday 8am to 5pm

## Mitre 10 Texas

68 High Street, Texas

07 4653 1499

[www.mitre10.com.au/stores/qld/texas-texas-mitre-10](http://www.mitre10.com.au/stores/qld/texas-texas-mitre-10)

Opening hours: Monday to Friday - 8am - 5pm

Saturday 8am – 12MD, Sunday - Closed



## Flowers and Pot Plants

**Steward:** TBC

**Entry fee:** 50c per entry

**Vouchers for the Open Champion and Open Highly Commended Award (Flowers and Pot Plants) – vouchers - kindly donated by House to Home, Inverell.**

**Prize money for Junior Champion and Junior Highly Commended donated by Rosemary and Dave Gordon**

### Flowers – Open Class

**Prizes:** 1st - \$3 plus certificate, 2<sup>nd</sup> = \$1 plus certificate, 3<sup>rd</sup> = certificate

**Open Champion** - \$30 voucher plus ribbon. **Open Highly Commended** - \$15 voucher plus certificate

### Categories

1. Collection of cut flowers – various types
2. 3 stems of flowers of the same type
3. Specimen flower – single cut flower
4. 1 specimen rose in full bloom
5. 3 full bloom roses in single container
6. 3 roses – bud to full bloom
7. Cuts of 3 different stems of foliage
8. Piece of driftwood with foliage or flower
9. 1 dahlia

### Flowers – Junior Class

#### Junior Classes

**Prizes:** 1st - \$3 plus certificate, 2<sup>nd</sup> = \$1 plus certificate, 3<sup>rd</sup> = certificate.

**Junior Champion:** \$ 20 voucher plus ribbon. **Junior Highly Commended:** \$10 voucher plus certificate

### Category

1. Floral display- displayed in any format (plate, container, box)



## Pot Plants – Open Class

**Prizes:** 1st - \$3 plus certificate, 2<sup>nd</sup> = \$1 plus certificate, 3<sup>rd</sup> = certificate

**Open Champion** - \$30 voucher plus ribbon.. **Open Highly Commended** - \$15 voucher plus certificate

### Categories

1. Flowering pot plant
2. Foliage pot plant
3. Fern
4. Container of 3 succulents
5. Single succulent
6. Miniature garden display (tray or plate)

## Pot Plants - Junior Class

**Prizes:** 1st - \$3 plus certificate, 2<sup>nd</sup> = \$1 plus certificate, 3<sup>rd</sup> = certificate

**Junior Champion** - \$20 voucher plus ribbon . **Junior Highly Commended** - \$10 voucher plus certificate

### Category

1. Miniature garden



## Cooking

**Conditions of entry:** Packet mix NOT TO BE USED.

**Steward:** TBC

**Mobile:**

**Entry fee:** 50c per entry

**Prize money for the Open and Junior Champion and Open and Junior Highly Commended kindly donated by Ashford Show Society.**

**Nell Thompson Perpetual Trophy donated by Bonshaw CWA.**

## Open Class

**Prizes:** 1st - \$3 plus certificate, 2<sup>nd</sup> = \$1 plus certificate, 3<sup>rd</sup> = certificate

**Open Champion** - \$30 plus ribbon

**Highly Commended** - \$15 plus certificate

## Categories

1. 6 plain scones
2. 6 pikelets (or pancakes)
3. 3 Decorated cupcakes
4. 3 muffins- savoury or sweet
5. Boiled fruit cake- not iced
6. Chocolate cake with chocolate icing
7. Decorated cake
8. Sultana cake – not iced
9. Banana bread
10. Date loaf or roll
11. Baked slice-any type
12. Coconut slice
13. Fruit slice
14. Anzac biscuits
15. Any other biscuit
16. 6 scones made by a male

## Junior Class

**Prizes:** 1st - \$3 plus certificate, 2<sup>nd</sup> = \$1 plus certificate, 3<sup>rd</sup> = certificate

**Junior Champion** - \$20 plus ribbon      **Junior Highly Commended** - \$10 plus certificate

## Categories

1. 3 muffins- savoury or sweet
2. 3 decorated cup cakes
3. 3 decorated Arrowroot biscuits



## Preserves

**Conditions of Entry:** All entries are to be displayed in 250ml screw top jars, Commercial lids to be covered and bottles suitably labelled.

**Steward:** TBC

**Entry fee:** 50c per entry

**Open and Junior prizes donated by DSB Santa Gertrudis Stud and the Ashford Show Society**

## Open Classes

**Prizes:** 1st - \$3 plus certificate, 2<sup>nd</sup> = \$1 plus certificate, 3<sup>rd</sup> = certificate

**Open Champion** - \$20 plus ribbon

**Open Highly Commended** - \$10 plus certificate

## Categories

1. Jar of jam- any variety
2. Jar of marmalade (any variety)
3. Jar of any jelly/conservé
4. Jar of preserved fruit
5. Jar of lemon butter /curd
6. Jar of honey
7. Most attractive gift basket of 3 jars any type of preserve/honey
8. Bottle of sauce- any variety
9. Jar of chutney
10. Jar of pickles
11. Jar of relish
12. Jar of mustard pickles
13. Jar of pickled cucumbers
14. Jar of any pickled vegetable

## Junior Classes- under 18 years

### Categories

1. Any jar of preserve
2. Any jar of jam
3. Jar of relish / or pickles

**Prizes:** 1st - \$3 plus certificate, 2<sup>nd</sup> = \$1 plus certificate, 3<sup>rd</sup> = certificate

**Junior Champion** - \$10 plus ribbon

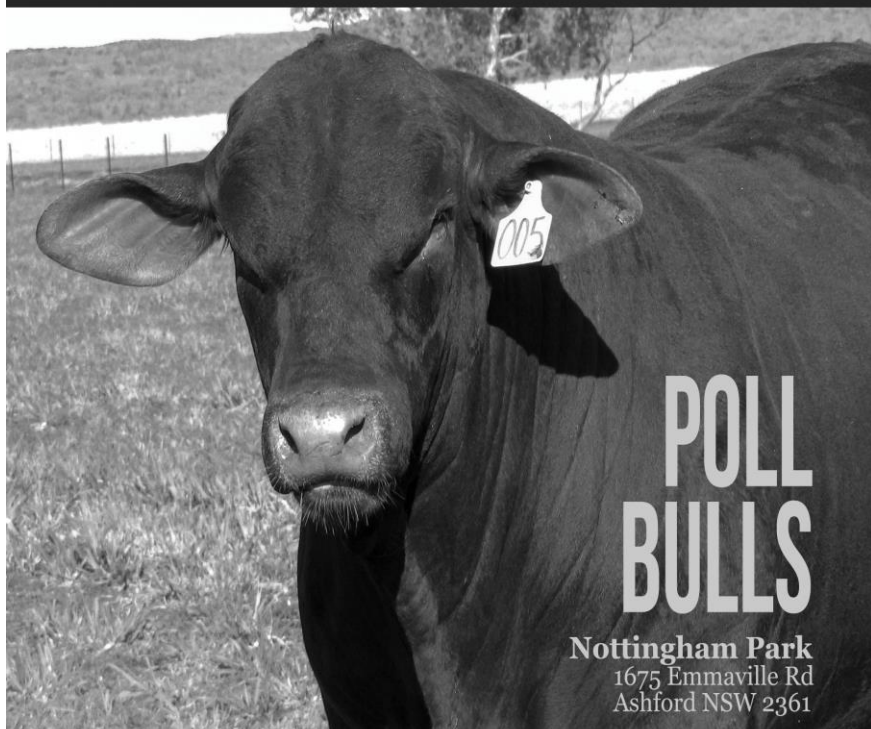
**Junior Highly Commended** - \$5 plus certificate



*DS Bradley and AJ MacKay*  
**DSB SANTA GERTRUDIS** STUD

www.bradleysantas.com.au  
fb: Bradley Santa Gertrudis Stud

Contact: Alison  
0400 141 548



- ◆ Semen Tested
- ◆ Muscle Scanned
- ◆ Horn Poll Tested
- ◆ Ask about Delivery

Selling classified & commercial bulls privately. We will deliver our bulls in the local area. On farm inspections welcome.

**DARK POLL BULLS WITH EXCELLENT TEMPERAMENT**



## Art

### Art

**Steward:** Veronica Park

**Mobile:** 0417172747

**Entry fee** - \$1 per entry

**Prizes:** 1st - \$10 plus certificate, 2<sup>nd</sup> = \$5 plus certificate, 3<sup>rd</sup> = certificate

**Open Champion** - \$30 plus ribbon. **Highly Commended Award**- \$15 plus certificate

**Open Champion and Highly Commended is kindly sponsored by TnJ Store, Ashford**

### Categories

1. Landscape- any medium Open Classes
2. Portrait – any medium
3. Still life – any medium
4. Unframed
5. Drawing
6. Abstract
7. Animals and Birds
8. Fibre Art – any medium
9. Any other subject – any medium



## Craft

### Craft - Open

**Steward:**TBC

**Mobile:**

**Entry fee** - \$1 per entry

**Prizes:** 1st - \$10 plus certificate, 2<sup>nd</sup> = \$5 plus certificate, 3<sup>rd</sup> = certificate

**Open Champion** - \$30 plus ribbon. **Highly Commended Award**- \$15 plus certificate

**Open Champion and Highly Commended** is kindly sponsored by TnJ Store, Ashford

### Categories

1. Woodwork and metalwork
2. Jewellery/Beadwork
3. Paper craft – including greeting card, scrapbooking
4. Any craft from Ashford Community Health Centre
5. Bags – any type
6. Wall hanging – any type
7. Recycled- any type
8. Diamond Painting
9. Paint by Numbers
10. Any other craft
11. Special feature, subject to number & type of entries



***Picture it Framed***  
***Quality Custom Framing***

41 Karinda Drive  
 Inverell NSW 2360  
 P- 0427 793 858  
 E- edgewoodframing@bigpond.com

Find us on




***Etched In Time***  
***Quality Custom Engraving***

41 Karinda Drive  
 Inverell NSW 2360  
 P- 0427 793 858  
 E- edgewoodtrophies@gmail.com

Find us on





## Photography

### Conditions of entry:

Any type of camera or phone can be used. Photos to be securely mounted on black or white cardboard with a 25mm border. Name, class, and category on back of each entry. Maximum size of photos not to exceed 7 x 5.

**Entries must not have been entered in a previous Ashford Show.**

Limit of 3 photos per category per person.

### N.B. All entries for Photography close Thursday 15<sup>th</sup> February (before the Show.)

Junior entries to be taken to the office at the school, Open entries taken to Kirsty Beveridge, 52 Duff St, Ashford.

## Open Classes

**Steward:** TBC

**Mobile:**

**Entry fee:** 50c per entry

**Prize money for the Open and Junior Champion and Open and Junior Highly Commended Award kindly donated by Edgewood Framing and Trophies and Engraving.**

**Prizes:** 1<sup>st</sup> - \$3 plus certificate, 2<sup>nd</sup> = \$1 plus certificate, 3<sup>rd</sup> = certificate

**Open Champion** - \$ 30 plus ribbon    **Highly Commended** - \$15 plus certificate

### Categories:

1. Landscape/waterscape
2. Reflection/silhouette
3. Sunrise/Sunset
4. Waves/ Clouds
5. Architecture/ Building
6. Portrait
7. Black & white or sepia- any subject
8. Flora
9. Fauna
10. Birds
11. Drone photo
12. Action
13. Panorama, colour or black and white
14. Macro – any subject
15. Travel photo- within Aust.
16. Travel photo – outside Aust.
17. Australiana
18. Local Ashford District (40km)

## Photography

### Junior Class

**Entry fee:** 50c per entry

**Prizes:** 1st - \$3 plus certificate, 2<sup>nd</sup> = \$1 plus certificate, 3<sup>rd</sup> = certificate

**Junior Champion** - \$20 plus ribbon

**Junior Highly Commended Award** - \$10 plus certificate

#### Categories

1. Landscape/waterscape
2. Reflection/silhouette
3. Sunrise/Sunset
4. Pets/animals
5. My family/friends
6. Funny photo
7. Selfie
8. Any other subject

# TEXAS NATURAL THERAPIES

*Acupuncture ~ Massage ~ Reflexology*

78 High St, Texas

0434 613 416



**Sr Makims**

## **Town & Country**

## **Nursing Service**

**Pty Ltd**

**Ph: 02 6721 1920 - Mob: 0427 255 708**

**Providing professional, personal and friendly  
in-home service in all areas of health care.**

**Registered Nurses  
Personal Carers  
Home Carers  
Respite Carers  
Transport & Assistance**

**55 Henderson Street  
Inverell  
P.O. Box 15**





INVERELL  
**COMMUNITY  
SUPPORT**

*your link to the community*

**ASHFORD**

**OFFICE**

(Formerly known as HACC)

**02 6725 4479**

### **Servicing Ashford and Neighbouring Communities**

- Transport to Medical Appointments
- Fortnightly Shopping Bus
- Tuesday Craft & Social Activities

**The Ashford office is open on Tuesdays 9am - 2pm**

When unattended, all calls will be forwarded to the Inverell office.

Interested in Volunteering?

Please get in touch as we need volunteer drivers in Ashford.

## **THORLEY & SONS FUNERAL SERVICES** **SAPPHIRE CITY CREMATORIUM**

**Ph 02 6722 2566 - all hours**

*"Our Family Caring for Your Family"*

*We offer a courteous service  
with care and compassion.*

*We are attentive to those we serve  
without being intrusive.*

*At all times we will be Truthful, Trustworthy and Reliable.*



**Servicing Inverell and Districts as  
Funeral & Cremation Directors.**





## Collector's Corner

**Steward:** TBC

**Mobile:**

**Entry fee:** 50c per entry

**Prize money for the Open and Junior Champion and Open and Junior Highly Commended Award kindly donated by: Jodie & David Walker- Rawbind Bees**

## Open Classes

**Prizes:** 1st - \$3 plus certificate, 2<sup>nd</sup> = \$1 plus certificate, 3<sup>rd</sup> = certificate

**Open Champion** - \$30 plus ribbon

**Highly Commended** - \$15 plus certificate

**Categories:**

1. Prettiest plate
2. Prettiest cup and saucer or set
3. Most interesting picture frame
4. Most interesting vase
5. Decorative jug
6. Old biscuit or tea tin
7. Photography article
8. Piece of crystal
9. Piece of fine china
10. Prettiest doilie
11. Figurine
12. Most interesting mirror
13. Old hand made sewn item
14. Cake stand
15. Old/antique Clock
16. Painted milk can
17. Set of decorative collector spoons
18. Old/antique phone
19. Old radio
20. Old agricultural/farming item
21. Any other interesting domestic item

## Junior Classes

**Entry fee:** 50c per entry

**Prizes:** 1st - \$3 plus certificate, 2<sup>nd</sup> = \$1 plus certificate, 3<sup>rd</sup> = certificate

**Junior Champion** - \$20 plus ribbon

**Junior Highly Commended** - \$10 plus certificate

### Categories:

1. Open Junior Collector's Item (e.g. novelty item, collection of items, supermarket promotion collection set)

# ASAP Office Supplies

43 Vivian St. Inverell



We mean business

Ph 6721 1400  
Fax 6721 1444



email: [asapoff@bigpond.net.au](mailto:asapoff@bigpond.net.au) . [www.officenational.com.au/asap](http://www.officenational.com.au/asap)

# AUSTRALIA POST TEXAS

*Licensees Kim & Carina Mayers*



Come in and see us for all your postal and bill paying needs  
**Australia Post has a range of Office Supplies & Gifts**

*We do colour photocopying, laminating  
Faxing and Passports*

We are open Monday to Friday  
from 9am to 5pm

Phone: **07 4653 1347**

**Proud Sponsors of the Ashford Show.**

## Ashford Business Council



**Inverell Shire Council**

**PROUD  
TO  
SUPPORT  
THE  
ASHFORD  
SHOW**

*Duncan Coote*  
**PAINTER & DECORATOR**  
**BUILDING MAINTENANCE**



*Repaint Specialist*

- Wall Papering ▪ Renovations
- Commercial ▪ Residential ▪ Insurance

**Ph: 0428 437 848**

Lic No: 58982C  
ABN: 69 041 866 798

**Generous sponsor of the Student Art and Craft**



## **Student Art and Craft**

**Stewards:** Alex Wrobel, Michael Simpson

**Entry Fee:** 50c per entry

All enquiries to Ashford Central School 67254101

**All prizes generously donated by Duncan Coote, Painter, Ashford**

## **Student Art and Craft**

**Prizes for each Category:** 1st - \$8 plus certificate, 2<sup>nd</sup> = \$4 plus certificate, 3<sup>rd</sup> = \$2 plus certificate

**Champion** - \$25 plus ribbon

**Highly Commended Award**- \$10 plus certificate

**Categories:**

1. Pre-school
2. Kindergarten – Year 2
3. Years 3 – 6
4. Years 7 to 12
5. Open Age – Best Ashford Show Poster
6. Item of Metal work / Woodwork – open age

## **Construction Model**

**Entry fee:** 50c per entry

**Prizes for each Category:** - \$8 plus certificate, 2<sup>nd</sup> = \$4 plus certificate, 3<sup>rd</sup> = \$2 plus certificate

**Champion** - \$25 plus ribbon

**Highly Commended Award**- \$10 plus certificate

**Age Groups:**

1. Pre-school
2. Kindergarten – Year 2
3. Years 3 – 6
4. Years 7 to 12

**Categories:**

Open Construction Model ( e.g. Lego/ Duplo/ Meccano)

**The school will present a prize and certificate to the student who submits the  
Overall Most Entries in the Show.**

# **"MADE BY ME"**

## **ASHFORD SEWING SERVICES**

**In a Workshop...Not a Sweatshop**

**Repairs & Alterations.  
Work Clothes, School Uniforms.  
Dress Making.  
Industrial Sewing and more!**



## **Call Jen, on 0429 933196**



## Needle Work

**Condition of entry:** Items must not have been previously entered

**Stewards:** Leza Luckett 0458404765

Tiarna Beveridge 0437404012

**Entry fee:** 50c per entry

**Prize money for the Open and Junior Champion and Open and Junior Highly Commended Award kindly donated by TnJ Store, Ashford.**

## Open Class:

**Prizes:** 1st - \$3 plus certificate, 2<sup>nd</sup> = \$1 plus certificate, 3<sup>rd</sup> = certificate

**Open Champion** - \$30 plus ribbon

**Highly Commended** - \$15 plus certificate

**Categories:**

**Open class:**

1. Article of hand embroidery
2. Crochet article
3. Hand knitted article
4. Cross stitch article
5. Textile art- any medium
6. Quilt, any medium – self quilted
7. Quilt, any medium – professionally quilted
8. Small project – Wall-hanging, Tablecloth, Runner, Placemat, Decorated towel or handtowel – any sewing method
9. Most attractive cushion
10. Handmade doll, bear or toy
11. Most attractive handmade bag
12. Article made by local person over 70 years
13. Machine embroidered item
14. Any other handmade item

## Junior Class

**Entry fee:** 50c per entry

**Prizes:** 1st - \$3 plus ribbon and certificate, 2<sup>nd</sup> = \$1 plus ribbon and certificate, 3<sup>rd</sup> = ribbon and certificate.

**Junior Champion** - \$20 plus ribbon **Junior Highly Commended** - \$10 plus certificate

### Categories:

1. Machine made article
2. Wall hanging or quilt, any medium
3. Handmade bag
4. Decorated pillowcase / cushion
5. Hand embroidered item
6. Crochet article
7. Knitted article
8. Any other needlework (including cross stitch)



# Forms

**Itinerant Space Application  
Waiver of Duty of Care Form  
Pavilion Entry Form**

ASHFORD SHOW SOCIETY INCORPORATED PO. BOX 20 ASHFORD NSW. 2361

**2024 ITINERANT SPACE APPLICATION**

President: Trevor Tindall – 0448811813 Secretary: Christine Wirth – 0437 299 230

Email: [ashfordshow@gmail.com](mailto:ashfordshow@gmail.com)

Name of Stall Holder: \_\_\_\_\_

Name of Stall: \_\_\_\_\_

Address: \_\_\_\_\_

Phone: \_\_\_\_\_

Email: \_\_\_\_\_

**Stall sites are charged on a per metre frontage basis @ \$15 per metre and are for the duration of your stay. POWER and CAMPING fees are NOT INCLUDED in this price.**

**Outstanding fees must be paid on arrival.**

**Sites available from Monday in the week preceding the show and will be allocated by the show committee. Sites to be vacated by 10am on the day of departure.**

\$20 million Public Liability Insurance is required by all Business/Commercial stall holders & a copy sent or handed to committee with outstanding fees on arrival.

**Policy Number** \_\_\_\_\_

**CANCELLATION MUST BE RECEIVED 14 DAYS PRIOR TO THE SHOW FOR REFUND.**

**STALL SITE SIZE:**

Metre Frontage required: \_\_\_\_\_ Metres @ \$15.00 per metre = \$ \_\_\_\_\_

**Stall Site Power:** Extra leads will be disconnected unless authorised and paid for.

Single Phase: **\$15.00 per lead, per night of connection to supply.**

Number of leads \_\_\_\_\_ @ \$15.00 per lead = \$ \_\_\_\_\_ x nights connected = \$ \_\_\_\_\_

Three Phase: **\$25.00 per lead, per night of connection to supply.**

Number of leads \_\_\_\_\_ @ \$25.00 per lead = \$ \_\_\_\_\_ x nights connected = \$ \_\_\_\_\_

Administration fee for Hobbyist Stall Holders \$24.00 \$ \_\_\_\_\_

**TOTAL** \$ \_\_\_\_\_

**CAMPING: FREE**

**I understand and agree to all fees and conditions as outlined above.**

**Signed** \_\_\_\_\_ **Date** \_\_\_\_\_

### **Insurance Declaration:**

A] For Business/Commercial Stallholders: Defined as those who are a commercial enterprise and have an ABN. These stallholders **must have their own insurance policy** with a minimum \$ 20 million Public Liability cover and provide a copy of their certificate of currency to the Show Committee. They cannot access the show's public liability insurance in any manner.

B] For Hobbyist Stallholders: Defined as those who are not running a formal commercial enterprise nor have an ABN and they earn under \$20,000 per year from their stall activity. Those Hobbyist Stallholders who meet this definition and have signed the below declaration are automatically covered under the show's insurance cover for Public Liability. The ASC's Public Liability does not extend to Hobbyist's in any manner for any Products Liability Exposure.

***I declare that I am a Hobbyist Stall Holder. Do not have an ABN and do not earn more than \$20,000 in this enterprise on an annual basis. I am therefore protected under the show's Liability policy for Public Liability only. I am aware that this protection does not extend to Products Liability.***

Signature: \_\_\_\_\_

Date: \_\_\_\_\_

### **Notes for or by Committee:**

Notes submitted by: \_\_\_\_\_

Signed: \_\_\_\_\_

# Waiver of Duty of Care Form

AGRICULTURAL SOCIETIES COUNCIL OF NEW SOUTH WALES LIMITED

THIS DOCUMENT IS A NO DUTY OF CARE RISK WARNING  
THIS DOCUMENT IS A WAIVER OF DUTY OF CARE

Do not complete "Event" details if this document only applies to use of facilities other than for an Event.

Event Name (subsequently referred to as "the Event"): .....

Event Date: .....

Participant's Name: .....

Participant's Date of Birth: .....

Participant's Address: .....

Participant Contact Number: .....

Participant Email: .....

## Section A - Supplier's statements about risk and duty of care

Agricultural Societies Council of New South Wales Limited and

(Name of Show) ..... (together the Suppliers) advise as set out below.

The handling of animals is a dangerous recreational activity as animals can act in a sudden and unpredictable way, especially when frightened or hurt.

Participation (including passive participation) in animal handling and/or physical competitions and/or Events at an agricultural show and/or use of the Suppliers' facilities contain elements of risk, both obvious and inherent.

Physical competitions and activities, Events and use of the Suppliers' facilities are all dangerous recreational activities. This document is a risk warning for the purpose of section 5M of the Civil Liability Act NSW 2002. This risk warning is given by or on behalf of the Suppliers.

This document acts as an exclusion of liability under Part 1A Division 5 of the Civil Liability Act NSW 2002 if the services supplied by the Suppliers are supplied without reasonable care and skill.

## Section B - Participant's acknowledgements

By signing this document I acknowledge that:

1. Participation in the Event and/or use of the Suppliers' facilities is a recreational service for the purposes of section 139A of the Australian Competition and Consumer Act (Cth) 2010 and a recreational activity for the purposes of section 5K of the Civil Liability Act (NSW) 2002.
2. I participate in the Event and/or use of the Suppliers' facilities at my own risk.
3. Participation in the Event and/or use of the Suppliers' facilities is a hazardous activity and involves a significant risk of physical harm and may result in injury, loss, damage or death to me and others.
4. Participation in the Event and/or use of the Suppliers' facilities requires certain skills and experience. I declare that I have sufficient skills and experience to be able to safely and properly participate in the Event and/or use the Suppliers' facilities.
5. Animals can act in sudden and unpredictable ways, especially if frightened or hurt, or if exposed to loud or unfamiliar noises.
6. The Event will be held in close proximity to rides and large groups of people and there may be loud and unfamiliar noises which can frighten animals used in the Event.
7. If the Event is held outdoors, there are risks to me as a result of the weather conditions, including either extreme hot or cold weather, rain or wind.
8. Insects or other animals may cause animals used in the Event to become frightened and act in an unpredictable way.
9. In handling animals, there is a risk of suffering injury including injuries caused by the animals.
10. I am responsible for ensuring that I have and will wear equipment suitable for my safety in my participation of the Event and/or in using the Suppliers' facilities.
11. I am responsible for the condition of any tools and equipment and ensuring that they are appropriate for the Event and/or in using the Suppliers' facilities.

Page 1 of 2  
Version: September 2020

12. I use the Suppliers' facilities, including for the Event entirely at my own risk, as I find them and with the prior acceptance of the risk of possible danger to me, both obvious and inherent.
13. At the time of participating in the Event and/or in using the Suppliers' facilities, I will not to any degree be under the influence of alcohol or illicit drugs.
14. I will not consume any alcohol or illicit drugs while participating in the Event and/or in using the Suppliers' facilities and agree that such use may result in my being excluded from the Event and/or from using the Suppliers' facilities with no entitlement to any refund of money paid to the Suppliers for entry.
15. I agree to be bound by the rules and guidelines of the Suppliers as varied from time to time.

### **Section C - Participant's acceptance of risk & no duty of care & waiver of rights**

1. I acknowledge and agree that my participation in the Event and any associated activities and/or my use of the Supplier's facilities is dangerous and may have obvious and/or inherent risks as a result of which personal injury (and sometimes death) may occur.
2. I acknowledge that my participation in the Event and any associated activities and/or my use of the Supplier's facilities carry with them a significant risk of physical harm.
3. I accept and assume all risks of personal injury or death in anyway whatsoever arising from my participation in the Event and any associated activities and/or my use of the Supplier's facilities.
4. I waive my individual right to sue the Suppliers for all claims I may have for such personal injury or death against the Suppliers in any way whatsoever arising from or in connection with my participation in the Event and any associated activities and/or my use of the Supplier's facilities.
5. If I suffer personal injury or death while participating in the Event and/or from my use of the Supplier's facilities, I will not hold the Suppliers, their employees or agents legally responsible for any personal injury or death I suffer.
6. I will not sue the Suppliers, their employees or agents for any claims, actions, costs, damages or liability.
7. I release the Suppliers and their employees from legal responsibility for the services I have been provided and/or activity I have participated in, including the Event.

### **Section D - Signature**

#### **Where the participant is 18 years of age or over:**

I agree that I have read and understood this waiver prior to signing it.

I acknowledge that the Suppliers have permitted me to participate in the activity the subject of this document in reliance on the matters acknowledged by me and the representations I have made in this document.

I agree that this waiver is governed in all respects by and interpreted in accordance with the laws of New South Wales.

I agree that everything in this document is binding on me and my heirs, next of kin, executors and administrators.

Signature: .....

Dated: .....

#### **Where participant is UNDER 18 years of age (to be completed by a parent or guardian):**

Participant's Date of Birth .....

I ..... (insert parent/guardian name),  
being a parent or legal guardian of the above named participant, hereby consent to my child using the Suppliers' facilities and/or participating in the Event.

I confirm that I have read and understood and explained to the participant this waiver prior to signing it.

I acknowledge that the Suppliers have permitted the participant to participate in the activity the subject of this document in reliance on the matters acknowledged by me and the representations that I have made in this document.

I agree that this waiver is governed in all respects by and interpreted in accordance with the laws of New South Wales.

I agree that everything in this document is binding on me and my heirs, next of kin, executors and administrators.

Signature: .....

Dated: .....



## Ashford Show Pavilion Entry Form 2024

**Entry forms MUST be completed by the exhibitor for all entries at the time of entry.**

Subject to the rules, by laws and regulations of the Society and the Agricultural Societies, I make the following entries for the Ashford Show – (the exhibits being my own bona fide property). Ashford Show Society takes no responsibility for loss or damage.

### Example

Section	Category	Entries	Description	Entry fee	Total
Cooking	1	1	6 scones	50c	50c

Section	Category	Entries	Description	Entry fee	Total
				Final Total =	

Name: \_\_\_\_\_ Phone \_\_\_\_\_

Class: ☐ Open

☐ Junior

**(please print)**

## Advertisers Index

Company	Page
Argyle Freighters	54
Arlington Gasworld	52
ASAP Office Supplies	82
Ashford Showground	9
Ashford Business Council	83
Ashford Memorial Bowling Club	9
Australia Post Office (Texas)	83
AWN Squires	38
Bakers Barn Saddlery	36
Benny Ross Horse Breaking	30
Byron Parts	59
Campbell & Freebairn Chemist	22
Campbell's Fuel Service	54
Combined Freight	54
Crowies Paints	51
DBS Santa Gertrudis	73
Derrin Keane	49
Duncan Coote Painting/Decorator	84
Edgewood Framing	76
Edgewood Trophies & Engraving	76
Elders Inverell	57
F. Gaugroger & Sons	13
Foodworks/ Mitre 10/ Hong Yuens (Texas)	67
Fox & Lillie Wool Brokers	41
Frame Rural Agencies	45
H Hardware (Inverell)	14
Inverell Community Support (Ashford Office)	80
Inverell 4WD Centre	59
Inverell Auto Glass	52
Inverell Ford	58
Inverell Jockey Club	20
Inverell Power Farm	59
John Mair & Co	57
Kennards Hire Equipment	16
Kel Paul Mechanical	53
Kyron Thompson Fencing	7
Lehman Stock & Property	50

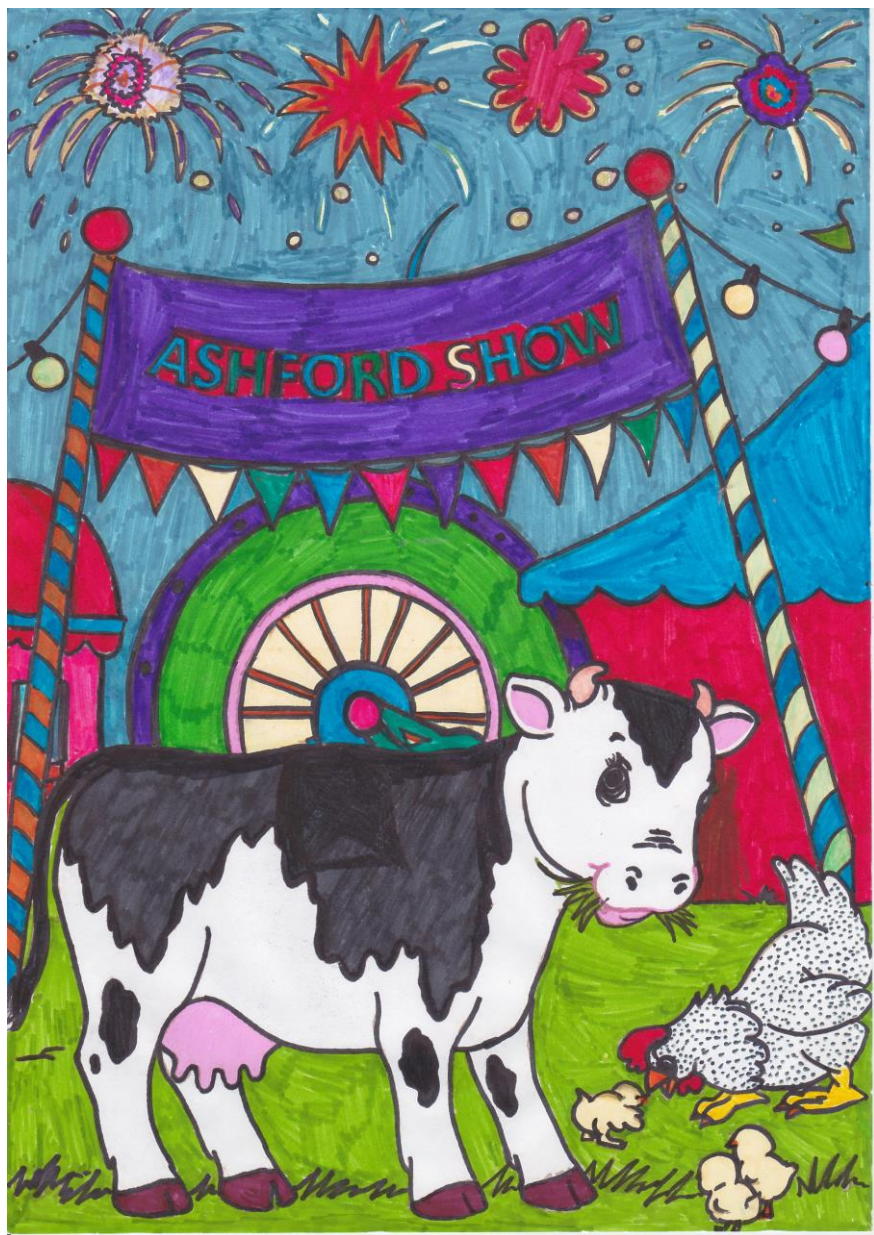
Company	Page
Lennon's Butchery	53
Made by Me	86
Matt Harrison Builder	3
McGregor Gourlay Agriculture	20
McLachlans Smash Repairs	15
Minos & Harris Crane Hire	59
Mountain Valley Stud	37
Nathan Landrigan	31
New England Toyota	50
No Bull Butchery	14
North West Saddlery	31
Notley's Wool Store	43
NutrienAg Solutions	27
Potters Petroleum	55
Precision Earthworks	17
RDO Equipment	61
Regional Group	56
Sapphire City Steel & Pipe	46
Schute Bell	45
Simpson's Sapphire City Panel Beating	56
St Hilary Merinos	43
Stewarts Grain Trading	28
Sunhaven Aged Hostel	49
Texas Natural Therapies	79
Thorley & Sons Funeral Service	80
TnJ Store	65
Town & Country Nursing	79
Vertebrate Pest Control	17
Vet Clinics Inverell	24
V & S Thompson Transport	55
Vital Health	26
Wilshire & Co (Texas)	11



<b>Sponsors List Show - Company /Name</b>	<b>Level</b>	<b>Section</b>
Ashford Memorial Bowling Club		Fireworks
Australian Wool Network		Wool Pavilion
AWN Squires		Wool Pavilion
Baked by Danielle		Showing Jumping
Bakers Barn Saddlery	Bronze	Horse Ring Events and Shearing
Benny Ross Horse Breaking	Bronze	Horse Events
Border Branch of Stockhorse Society		Horse Ring Events
Bunnings		Goods in Kind- Raffles
Campbell & Freebairn Chemist	Bronze	Show Jumping and Shearing
Doug and Cherie Beveridge	Bronze	Wool Pavilion and Shearing
DSB Santa Gertrudis Stud		Pavilion – Preserves
Duncan Coote Painting	Bronze	School Art and Craft
Edgewood Framing		Pavilion - Photography
Edgewood Trophies & Engraving		Pavilion - Photography
Fox & Lillie Wool Traders		Goods in Kind – Raffle
Dave & Rosemary Gordon		Pavilion – Flowers and Pot Plants
George & Maxine Julius		Poddy Ride
Kyron Thompson Fencing	Silver	Steer Ride
House to Home		Pavilion – Plants & Flowers
Inverell Jockey Club	Bronze	Show Jumping
Jodie and David Walker		Pavilion
John & Pauline Thompson		Showing Jumping
Matt Harrison Builder		Ram Ride
McGregor Gourlay Agriculture		Show Jumping
McLean Care		Showing Jumping
Nathan Landrigan	Bronze	Horse Event
North West Saddlery	Bronze	Horse Ring Events
Notley's Wool Store		Wool Pavilion
NutrienAg	Silver	Wool Pavilion, Showjumping
PD and RA Goddard		Wool Pavilion
Sapphire City Steel & Pipe	Bronze	Shearing
Schute Bell		Wool Pavilion
Simone & Trevor Lavender		Steer Ride
St Hilary Merinos	Bronze	Wool Pavilion
Sunhaven Aged Hostel	Bronze	Shearing

<b>Sponsors List - Company /Name</b>	<b>Level</b>	<b>Section</b>
The Jump Shack		Showing Jumping
Thompson Family		Wool Pavilion
TnJ Store, Ashford	Silver	Pavilion – Produce & Needlework Horse Events
Vet Clinics	Bronze	Horse Events
Vital Health	Silver	Horse Events
Wilshire & Co (Texas)		Dog Show





Picture provided by Chelsea Croker (7 yrs ) – 2<sup>nd</sup> place Colouring Competition – 2023 Show